



POLAR SITE FURNISHINGS
 12-111 Fourth Ave. Unit 120
 St. Catharines, ON,
 Canada L2S3P5
 Ph: 905-397-5353
 E: pnolan@sitefurnishings.net
 URL: www.sitefurnishings.net



GROWER "2" PLANTER

SPECIFICATION DATASHEET

PRE-CAST STEEL RE-ENFORCED CONCRETE. STAINLESS STEEL


LENGTH: 27.5" (70cm)

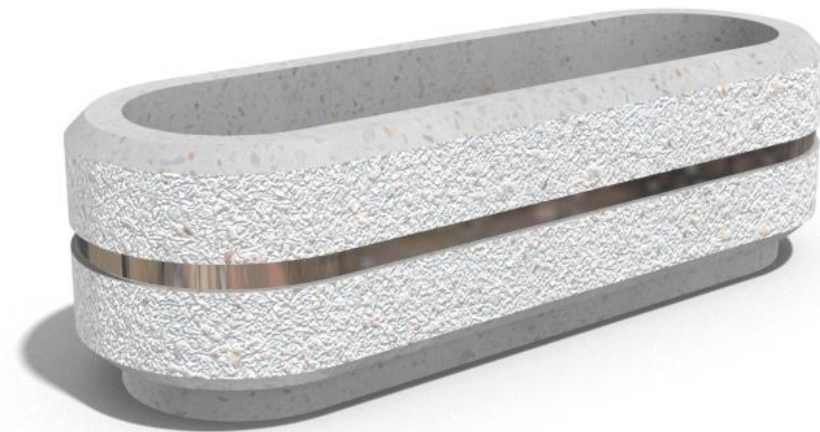
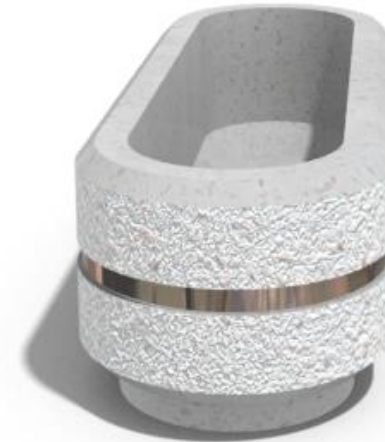
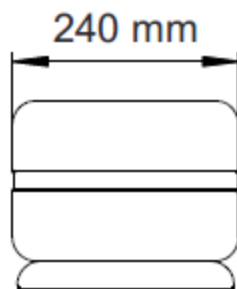
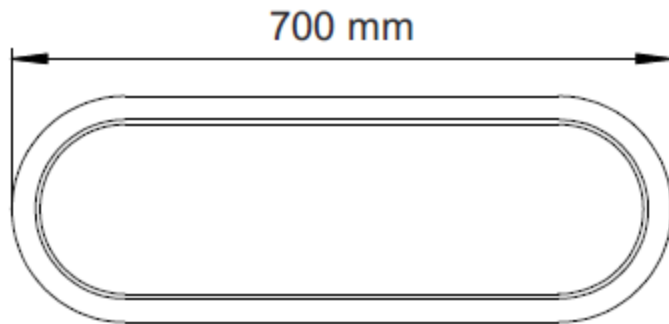
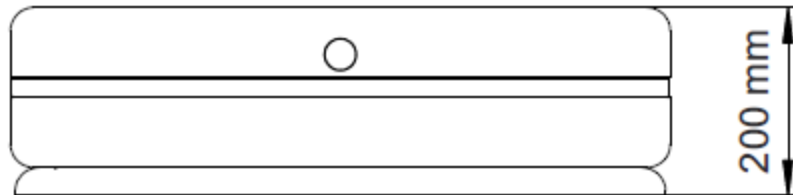
HEIGHT: 8" (20 cm)

WIDTH: 9.5" (24 cm)

FINISH: Natural Stone / Stainless Steel

MOUNTING: Free Standing

WEIGHT: 66 lbs. (30 kgs) 



MATERIAL SPECIFICATIONS

Pre-cast steel re-enforced concrete, Stainless steel reveal ring

Standard Pre-cast Colours: Brown, Grey, White, Speckled

RAL Standard Colours: 

*Final design may not be exactly as shown.